



NEW YORK YACHT CLUB
166th ANNUAL REGATTA
including
Melges IC37 National Championship
October 2-4, 2020
Newport, Rhode Island

SAILING INSTRUCTIONS

1 RULES

- 1.1** The regatta will be governed by the rules as defined in *The Racing Rules of Sailing* (RRS), including the current ORC rules, the current PHRF Regulations as administered by the PHRF of Narragansett Bay, and the current class rules for any one-design classes.
- 1.2** Safety Equipment Requirements:
- All boats shall minimally comply with the US Nearshore section as changed by the NOR Addendum 1 – US Safety Equipment Requirements (USSER) and shall comply with their class rules, where applicable.
 - USSER 2.4.2 through 2.4.9 regarding Hull and Structure: Lifelines shall apply, except that boats not normally rigged with lifelines are exempt for these requirements and shall wear approved PFDs at all times while racing.
 - In the event of a conflict between these Requirements and applicable class rules, the class rules shall apply.
- 1.3** US Sailing prescriptions to RRS 63.2 and RRS 63.4 are deleted.
- 1.4** The current PHRF-NB Regulations shall apply to boats racing under PHRF. There are no crew weight limits.
- 1.5** The current ORC Rating Systems shall apply to boats racing in the ORC class.
- 1.6** The current Melges IC37 Class Rules shall apply to all boats racing in the Melges IC37 Class, except as noted in these sailing instructions.
- 1.7** Sonar Class Rules shall not apply.
- 1.8** The current Shields Class Rules shall apply to all boats racing in the Shields Class, except as noted in these sailing instructions.
- 1.9** Liability Waiver and COVID-19 Release: No crew shall be aboard a boat while racing unless he/she has executed the online Liability Waiver Form and COVID-19 Release. The Liability Waiver Forms and COVID-19 Release are available on the Annual Regatta [website](#). Registration will not be complete without receipt of a complete Liability Waiver Form and COVID-19 Release from each crew member.

2 COMMUNICATIONS: NOTICES, ANNOUNCEMENTS, VHF CHANNELS

- 2.1 Notices, including race documents, results and amendments, shall be posted on the online Official Notice Board. Protest Committee information, including protest time limits and hearing schedules, shall be posted on the online Protest Committee Notice Board.
- 2.2 Any change to the sailing instructions will be posted before 0900 on the day it will take effect, except that any change to the schedule of races will be posted by 2000 on the day before it will take effect. Flag “Lima” will be flown to signify such posting.
- 2.3 In addition to the signals described in SI 3.3, the Race Committee will endeavor to announce the rendezvous locations as described in SI 5 and SI 6 at 0900 over VHF Channel 72. The failure to make this announcement or for a boat to hear this announcement will not be grounds for redress. This changes RRS 62.1(a).
- 2.4 After the rendezvous locations and any other regatta announcements have been made, Race Committee signal boats will monitor and communicate with their respective classes on the circle VHF channels published in SI 2.5.
- 2.5 VHF Channels - The Race Committee VHF channels for each circle are shown below:
- | | |
|--------------|----------------|
| Blue Circle | VHF Channel 72 |
| White Circle | VHF Channel 69 |
| Red Circle | VHF Channel 71 |
- 2.6 Each yacht shall carry a VHF radio capable of communicating with the Race Committee on their channel.

3 SIGNALS MADE ASHORE

- 3.1 Flag signals will be flown from the flagpole at Harbour Court.
- 3.2 When pennant “AP” is displayed ashore, “one minute” is replaced with “not less than one hour” in Race Signal “AP”.
- 3.3 Signals designating the rendezvous locations for all circles, will be displayed at 0900 each day from the flagpole at Harbour Court.

4 SCHEDULE OF RACES

- 4.1
- | | | |
|-------------------------|-----------|--|
| Wednesday, September 30 | 1100-1800 | Drive-Through Registration at Harbour Court |
| Thursday, October 1 | 1100-1800 | Drive-Through Registration at Harbour Court |
| | 1100-1400 | Melges IC37 Practice Races |
| Friday, October 2 | 1100 | First Warning Signal for all courses |
| Saturday, October 3 | 1100 | First Warning Signal for all courses (except Shields/Sonars) |
| | 1130 | First Warning Signal for Shields and Sonars |
| Sunday, October 4 | 1100 | First Warning Signal for all courses (except Shields/Sonars) |
| | 1130 | First Warning Signal for Shields and Sonars |
- 4.2 No warning signal shall be made after 1500 on Sunday, October 4.

5 CLASSES, CIRCLE ASSIGNMENTS, CLASS FLAGS, SCRATCH SHEETS AND FORMAT

- 5.1 **Classes** – The Organizing Authority will divide boats into classes.
- a) The **Melges IC37** class will be assigned to the White Circle and will sail drop mark courses on Friday, Saturday and Sunday. They will not participate in the Around-the-Island Race.
- b) **Shields** and **Sonars** will be assigned to the Red Circle. On Friday, they will sail drop mark races or a short distance race. These races will count separately and will not be combined in the Two-Day series.
- c) **PHRF, PHRF-Non Spin** and **ORC** classes:
- i) For the Around-the-Island Race on Friday, October 2, each class will be assigned a numeral or alphabetic designation and be designated the Blue Circle. This race does not count toward the Two-Day series total.
- ii) For the Two-Day Series:
- PHRF, PHRF-Non Spin will be assigned a numeral or alphabetic designation and will join the Shields and Sonars on the Red Circle.
 - ORC classes will be assigned a numeral or alphabetic designation and will be assigned to the Blue Circle.

- 5.2 Format** – For racing on Saturday and Sunday for all classes, the Race Committee will notify competitors (no later than 1900 on the day before they will take effect) of the intended type of racing for the following day:
- Navigator Races – SI Addendum A (using government marks and racing marks on Narragansett Bay and/or Rhode Island Sound).
 - Drop Mark Races – SI Addendum B (using inflatable buoys on Rhode Island Sound and/or Narragansett Bay).
- 5.3 Scratch Sheets** – There will be separate scratch sheets for Friday and for Saturday/Sunday. Scratch sheets will be posted on the Official Notice Board and may also be posted on the regatta website.
- 5.4 Class Flags** – Unless indicated on the scratch sheet, each boat shall display the numeric or alphabetic flag corresponding to her class designation, as shown on the scratch sheet, from her backstay approximately six feet above the deck from the warning signal for the first class on her circle until she is no longer racing. Boats without a permanent backstay shall conspicuously display these flags in an alternate position in the aft part of the boat.

6 RENDEZVOUS LOCATIONS

- 6.1** Circle rendezvous locations are listed below and will be designated as described in SI 3.3. See SI Addendum C – NYYC Primary Race Areas.

Rhode Island Sound:

- Area “A” -in the vicinity of 160° M for 1.2 NM from R “2” QR Whistle marking Brenton Point
- Area “B” -in the vicinity of 120° M for 2.5 NM from R “2” QR Whistle marking Brenton Point
- Area “C” -in the vicinity of 275° M for 3.0 NM from R “2” QR Whistle marking Brenton Point
- Area “D” -in the vicinity of 225° M for 2.0 NM from R “2” QR Whistle marking Brenton Point
- Area “E” -in the vicinity of 165° M for 5.0 NM from R “2” QR Whistle marking Brenton Point
- Area “F” -in the vicinity of 145° M for 3.5 NM from R “2” QR Whistle marking Brenton Point

Newport Harbor and near Newport Bridge:

- Area “K” -between Goat Island and Rose Island
- Area “M” -in the vicinity of R “12” west of Rose Island
- Area “O” -in the vicinity of Potter Cove (just north of west end of Newport Bridge)

North of Newport Bridge:

- Area “R” -in the vicinity of 200° for 0.5 NM from Halfway Rock
- Area “T” -in the vicinity of G “7” QG off Quonset Point
- Area “U” -in the vicinity of 035° M for 1.0 NM from Hope Island

- 6.2** Once on station, the Race Committee may announce the lat/long positions of the signal boat and starting mark over the circle VHF channel. Failure to make such an announcement, or the timing of any announcement, shall not be grounds for a boat to request redress. This changes RRS 62.1(a).

7 CHECK-IN AND RETIREMENT

- 7.1 Check in on Land:** Each boat shall check in at the NYYC Sailing Center at Harbour Court during the registration times so designated in the notice of race.

7.2 Check in on Water:

- Around-the-Island Race: Prior to their course signal, each boat shall check in with the Race Committee check-in boat displaying flag “L” that will be anchored to leeward and outside of the starboard end of the starting line by sailing or motoring by the stern of the check-in boat and announcing their sail number.
- Two-Day Racing, White Circle and Red Circle Friday Racing: Prior to their course signal each day, each boat shall check in with the Race Committee signal boat by sailing or motoring by the stern of the signal boat and announcing their sail number.

- 7.3** Boats retiring shall inform the Race Committee on their circle VHF channel or by calling (401) 845-9633.

8 COURSES AND MARKS

The courses and marks for the Annual Regatta are described in the SI Appendices as shown:

Courses using Government Marks	SI Addendum A
Drop Mark Courses	SI Addendum B

9 THE START

- 9.1 The intended order of starts for the Blue Circle sailing in the Around-the-Island Race on Friday, October 2, will be included in the Race Committee's announcement on VHF Channel 72 at 0900.
- 9.2 A boat starting later than 10 minutes after her starting signal will be scored Did Not Start. This changes RRS A4.
- 9.3 The starting line will be between a staff displaying an orange flag on the Race Committee signal boat and either a staff displaying an orange flag on the port-end Race Committee boat or the course side of the port-end starting mark as described in the relevant SI Addendum.
- 9.4 Boats whose warning signal has not been made shall keep clear of the starting area from the time of the course signals for the first start in the sequence until the warning signal for their class.
- 9.5 The Race Committee will endeavor to hail boats observed to be OCS at the start over their respective circle VHF channel. Failure to hail, the timing or order of any such hails, will not be grounds for a boat to request redress. This changes RRS 62.1(a).

10 CHANGE OF COURSE

See Addendum B – Drop Mark Courses.

11 THE FINISH

The finishing line will be between a staff displaying a blue flag on the Race Committee signal boat and the course side of the finishing mark as described in the relevant SI Addendum.

12 PENALTY SYSTEM

- 12.1 If class rules specify a penalty, a boat that may have broken a rule of Part 2 while racing may take a penalty at the time of the incident as provided in her class rules. If the class rules do not specify a penalty, RRS 44.1 is changed so that a boat can either take a penalty in accordance with RRS 44.1 or a scoring penalty in accordance with RRS 44.3.
- 12.2 For a boat sailing in the Around-the-Island Race on Friday, October 4, the penalty options described in SI 12.1 apply for all boats. Class Rules do not apply.
- 12.3 The Protest Committee may impose suitable penalties, other than disqualification, for violations of the World Sailing Offshore Special Regulations or other non-Part 2 rules. This changes RRS 64.1.
- 12.4 A boat that has taken a penalty shall complete an online penalty acknowledgement form no later than the end of protest time.

13 TIME LIMIT

- 13.1 For courses designated in accordance with SI A2.4, SI A2.5 or SI A2.6, the time limit for the first boat to sail the course and finish is five hours. Yachts failing to finish within 120 minutes after the first boat sails the course and finishes will be scored Time Limit Expired (TLE) and scored points as described in SI 15.4. This changes RRS 35, A4 and A5.
- 13.2 For courses designated in accordance with Addendum B, the time limit for the first boat to sail the course and finish is three hours. Yachts failing to finish within 45 minutes after the first boat sails the course and finishes will be scored Time Limit Expired (TLE) and scored points as described in SI 15.4. This changes RRS 35, A4 and A5.

14 PROTESTS AND REQUESTS FOR REDRESS

- 14.1 The intent to protest and the boat being protested shall be communicated to the Race Committee at the first reasonable opportunity after the boat intending to protest finishes until acknowledged by the Race Committee. This changes RRS 61.1(a).
- 14.2 Written protests or requests for redress shall be submitted through the online protest form as soon as possible, but not later than one hour after the Race Committee signal boat has docked. The time limit for filing a protest will be posted on the online Official Notice Board.
- 14.3 Protests will be heard via a conference call format as soon as possible. The protest committee will attempt to hear protests in the order of receipt. Guidelines for these virtual protest hearings are available on the Annual Regatta webpage.
- 14.4 Breaches of SIs 5.4, 7, 9.4 and 9.5 will not be grounds for a protest by a boat. This changes RRS 60.1(a).
- 14.5 The penalty for a breach of SI 9.4 or 9.5 shall be a minimum of two points. This changes RRS 64.1.

15 SCORING

- 15.1** The Around-the-Island Race, and racing for the Sonar and Shields classes on Friday, October 2, will be scored separately from racing in the Two-Day Series.
- 15.2** In the Two-Day Series, a boat's series score will be the total of her race scores. This changes RRS A2.
- 15.3** Melges IC37: Results from Friday, Saturday and Sunday will be used for the series scoring. Scoring will be in accordance with IMIC37 CR H3.1. This changes RRS A.2.
- 15.4** One race is required to be completed to constitute a series.
- 15.5** Boats that have started and fail to finish within the finish windows listed in SI 13 for any reason, shall, without a hearing, be scored Time Limited Expired (TLE) by the Race Committee and be assigned points equal to the number of boats in her class that have sailed the course and finished within the time limit, plus two. This changes RRS A4.1, A4.2 and A5.
- 15.6** Teams competing for team trophies will be scored in accordance with the notice of race.
- 15.7** For scoring purposes, the distance used (as needed) will be that as calculated by the Race Committee.

16 PRIZES

- 16.1** Prizes will be awarded as described in the notice of race.
- 16.2** Additional prizes may be awarded at the discretion of the OA.

17 WAIVER AND RELEASE OF LIABILITY

- 17.1** Competitors participate in the regatta entirely at their own risk. See RRS 4, Decision to Race. The Organizing Authority, New York Yacht Club, and any official sponsors will not accept any liability for material damage or personal injury or death sustained in conjunction with or prior to, during or after the regatta. Attention is also drawn to RRS 46 and USSER 1.2, Responsibility.
- 17.2** As a condition of entry, each owner, skipper and individual participating crew member shall submit an online Waiver & Release of Liability form and a COVID-19 Release. The fully executed Waiver & Release of Liability form and COVID-19 Release shall be submitted prior to racing. The waiver form link can be found on the Annual Regatta website.
- 17.3** Boats shall not be scored unless the skipper/person-in-charge has submitted a Waiver & Release of Liability form and COVID-19 Release.

18 SAFETY REGULATIONS

- 18.1** Restricted Channels: Competitors are reminded that Narragansett Bay and its approaches are considered restricted channels for commercial traffic and other vessels restricted in their ability to maneuver. Competitors must comply with the government right-of-way rules when in proximity to commercial or privileged marine traffic.
- 18.2** Newport Security Zone: In the event there is racing in Narragansett Bay, competitors should be aware of heightened security around the Navy base in Newport just to the north of the Newport Jamestown Bridge. The area may be defined by a series of white buoys marking the Newport Security Zone along the coast of the Naval Facilities from Coasters Harbor to the breakwater at the north end of Coddington Cove and the line defined by the buoys shall rank as an obstruction. Yachts shall not enter this area. A Navy patrol boat monitors the area and vessels navigating in the Exclusionary Zone may face action by Coast Guard and Naval authorities.
- 18.3** Additional Restricted Areas: There may be additional restricted areas due to Navy activity, shipping or fishing operations may be described in an amendment to the sailing instructions.

19 NOTES

- 19.1** The Annual Regatta website can be found at <https://nyyc.org/166th-annual-regatta>.
- 19.2** For further information please contact:
New York Yacht Club, Harbour Court
5 Halidon Avenue
Newport, RI 02840
Tel: 401-845-9633
Fax: 401-846-3303
Email: sailingoffice@nyyc.org

SAILING INSTRUCTIONS

ADDENDUM A – COURSES USING GOVERNMENT MARKS

A1 ORDER OF START

The intended order of start will be announced at course signals on the circle VHF Channel. Classes may not start in numerical order. The Race Committee may combine two or more classes into one start by displaying multiple class flags at the warning signal. The Race Committee will endeavor to announce the next class(es) to start on the circle VHF Channel.

A2 COURSES

A2.1 All boats shall pass through the center span only for any course passing under the Jamestown Verrazano Bridge and/or the Newport Jamestown Bridge in which case the center span bridge piers define a gate mark.

A2.2 Government marks shall have no required side except when designated as a rounding mark.

A2.3 No later than the warning signal, the Race Committee will display on a board the course to be sailed. The Race Committee will endeavor to announce the designated courses over the circle VHF channel. Failure to make such an announcement shall not be grounds for a boat to request redress. This changes RRS 62.1(a).

A2.4 COURSE 1 – If number one is displayed, the course will be clockwise around Conanicut Island:

- Special Mark “E”, if used (see SI A3.6)
- RG “NR” Bell 650 yards SW of Beavertail Point to starboard
- The center span of the Jamestown Verrazano Bridge
- C “5” 1,250 yards NW of Conanicut Point to starboard
- R “2” Fl R 4 Sec Bell 900 yards NE of Conanicut Point to starboard
- The center span of the Newport Jamestown Bridge
- Pass to the west of R “12” off Rose Island
- Finish off Fort Adams between a staff displaying a blue flag on a Race Committee boat and the finishing mark. The finishing line will be located approximately 0.4 NM north of the Fl R 6 sec Horn “2” on the northern point of Fort Adams.

A2.5 COURSE 2 – If number two is displayed, the course will be counter-clockwise around Conanicut Island:

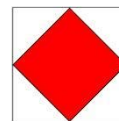
- Special Mark “E”, if used (see SI A3.6)
- Pass to the west of R “12” off Rose Island
- The center span of the Newport Jamestown Bridge
- R “2” Fl R 4 Sec Bell 900 yards NE of Conanicut Point to port
- C “5” 1,250 yards NW of Conanicut Point to port
- The center span of the Jamestown Verrazano Bridge
- RG “NR” Bell 650 yards SW of Beavertail Point to port
- Finish off Fort Adams between a staff displaying a blue flag on a Race Committee boat and the finishing mark. The finishing line will be located approximately 0.4 NM north of the Fl R 6 sec Horn “2” on the northern point of Fort Adams.

A2.6 COURSE 3 – If number three is displayed, the course will be designated using buoys as described in SI Addendum A3. The Race Committee will list the marks in the order to be rounded and the required side to leave each mark. The course will be:

- Start
- Round the marks in the designated order leaving each mark to the designated side.
- Finish between a staff displaying the blue flag on the Race Committee boat and the nearby finishing mark. Note that the intended finishing line will be set at the starting location of the Race Committee signal boat.

A2.7 The Race Committee vessel at the finish may or may not be the same vessel that started the race.

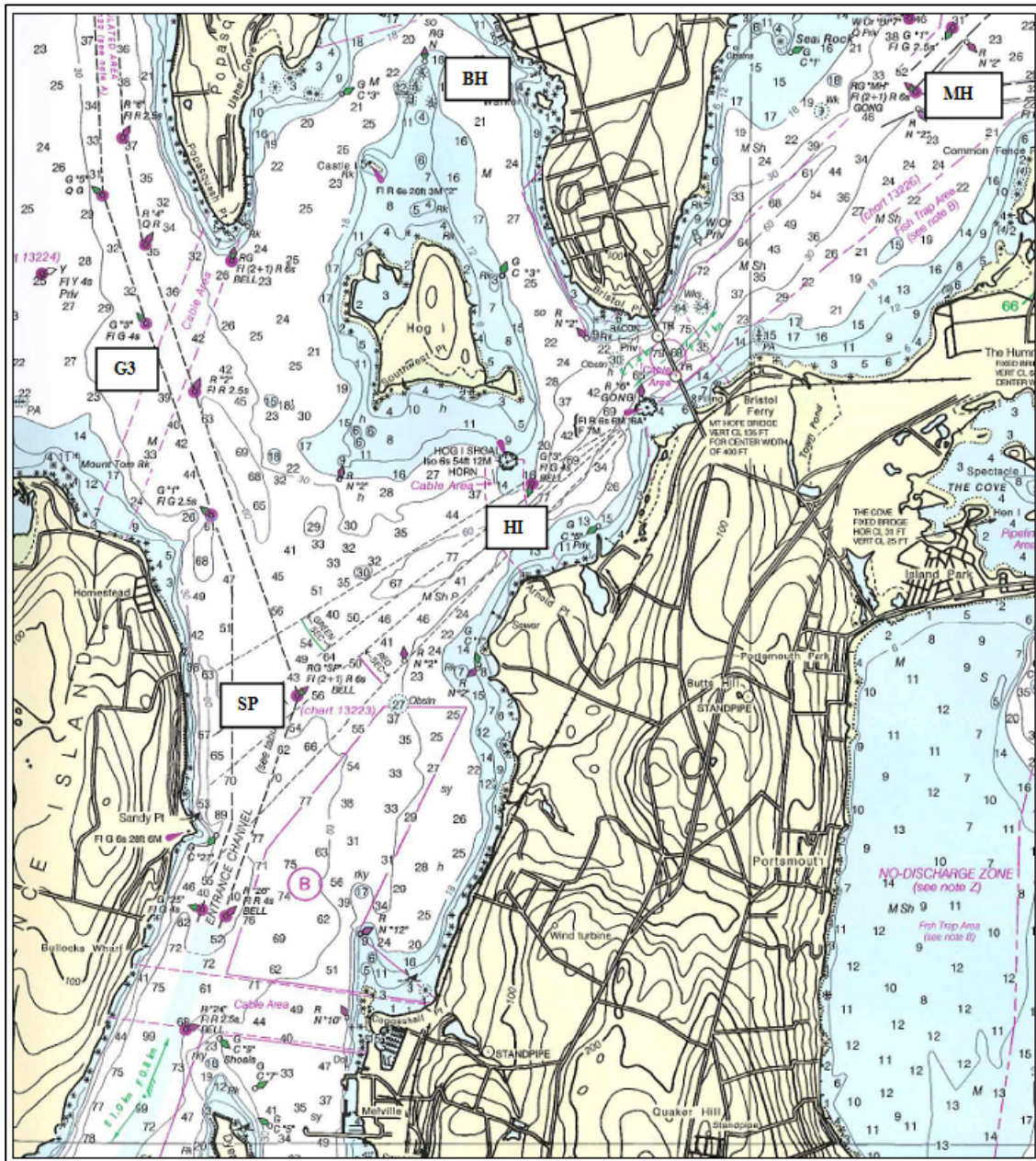
- A2.8** If at the start, Flag “F” is displayed on a separate pole, the finishing line will be between a staff displaying a blue flag on a Race Committee boat and the nearby finishing mark approximately 0.4 NM north of the Fl R 6 sec Horn “2” on the northern point of Fort Adams. In the absence of the Race Committee boat and/or finishing mark, the finishing line will be on a bearing of 120o M from G “3” Gong southeast of Rose Island.



A3 MARKS

- A3.1** The starting mark will be a green tetrahedron buoy.
- A3.2** The finishing mark will be a pink tetrahedron buoy.
- A3.3** Special Marks “E” and “L”, if used, will be the same as the original mark colors for each circle as described in SI B2.1.
- A3.4** If used, Special NYYC Temporary Inflatable Race Marks 16 and 17 as designated on the current South Bay Race Chart will be orange tetrahedron buoys.
- A3.5** All buoys listed on the current *South Bay Race Chart* provided at registration may be used in Course 3. In addition, the marks listed in SI Addendum A4.3 and A4.4 below are additional rounding marks that might be used.
- A3.6** **Special Mark “E”**
- The Race Committee may add a new first mark “E” to any course described in SI Addendum A2.
 - If special mark “E” is used for Course 1 or Course 2, the Race Committee will display on a board the letter “E” next to the letter “S” (round special mark “E” to STARBOARD) or next to the letter “P” (round special mark “E” to PORT).
 - In Course 3, the Race Committee will list “E” along with the designated rounding side as the first mark on the course board as described in SI A2.6.
 - The magnetic bearing and distance (in nautical miles to the nearest tenth) to special mark “E” will be posted on a board on the Race Committee signal boat.
- A3.7** **Special Mark “L”**
- The Race Committee may set special mark “L” approximately 0.1 NM to windward of the start line.
 - If special mark “L” is used, it will be listed as a mark as described in SI Addendum A2.6.
- A3.8** **GOVERNMENT MARKS & ISLANDS**
See charts 13205, 13218, 13223, 13226 and 13224 for more detail.

<u>Description</u>	<u>Approx. location</u>
1 Gould Island	41° 32.00' N; 071° 20.67' W (center of island)
3 Hope I (east of Quonset) including R “2” at the southwest end and G C “1” at the northeast end	
4 Conanicut Island	
5 RW “NB” Mo(A) WHIS	41° 23.00' N; 071° 23.36' W
7 R “2” Fl R 4s WHIS south of Point Judith	41° 18.46' N; 071° 28.35' W
1BI G “1 BI” Fl G 4s BELL north of Block I	41° 15.49' N; 071° 34.55' W
M Block Island including:	
R “4” Fl R 6s WHIS off Southwest Pt	41° 08.73' N; 071° 37.35' W
Black Rock Pt. Buoy 2	41° 08.42' N; 071° 35.74' W
U Buzzards Light Tower Fl 2.5s 67ft 17M Horn	41° 23.82' N, 071° 02.08' W
PR Prudence Island including R “8” northwest of Patience Island and RG N at the northern end	
SP RG “SP” Fl (2+1) R 6s BELL	41° 36.92' N; 071° 17.59' W
G3 G “3” Fl G 4s (approx. 0.5 NM sw of Popasquash Neck)	41° 38.53' N; 071° 18.46' W
MH RGR “MH” Fl (2 +1) R 6s GONG in Mt. Hope Bay	41° 39.54' N; 071° 14.04' W
BH RGR N "Middle Ground Buoy" approx. 0.8 NM n of Hog I	41° 39.68' N; 071° 16.87' W
HI G “3” Fl G 4s BELL approx. 0.4 NM south southeast of Hog I	41° 37.79' N; 071° 16.29' W
DI Dutch Island	41° 30.19' N; 071° 24.04' W (center of island)



Marks near Prudence Island, Bristol and Mt. Hope Bay

SAILING INSTRUCTIONS

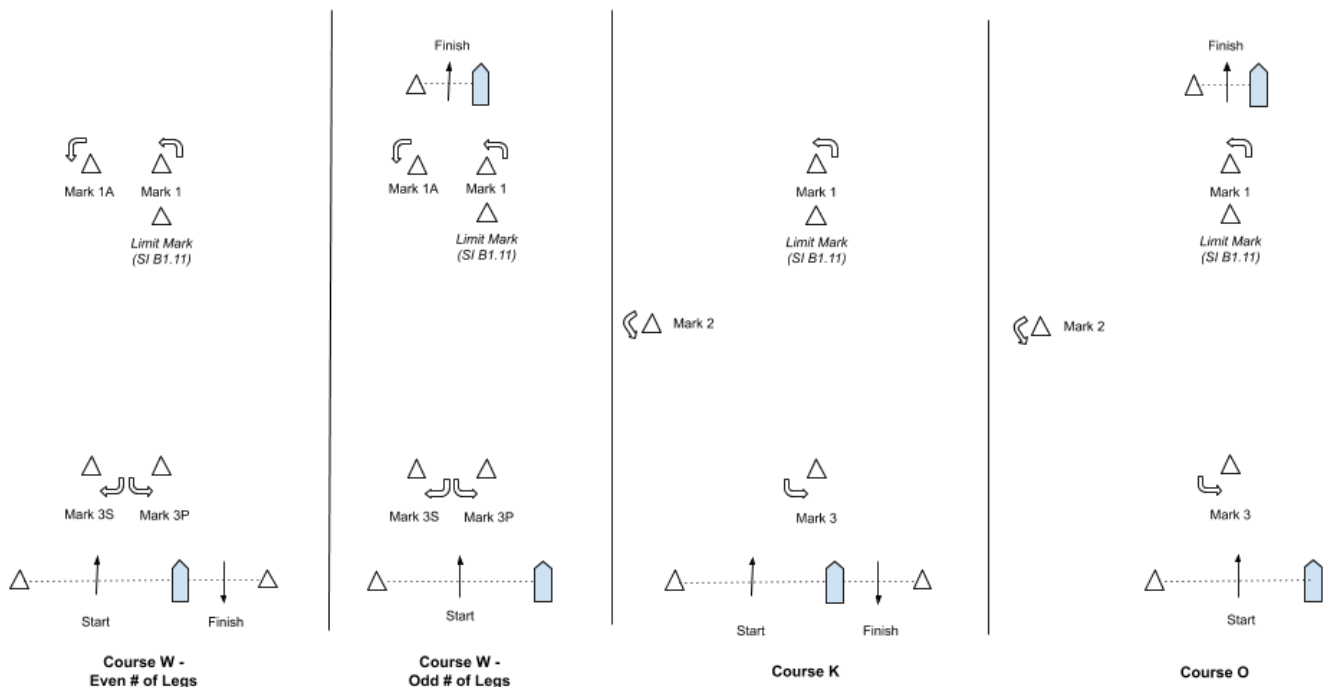
ADDENDUM B – DROP MARK RACES

B1 COURSES FOR DROP MARK RACES

B1.1 The Race Committee signal boat will signal the course on a course board. Course designations are as follows:

- W2 Start – 1 – 1A – Finish (downwind)
- W3 Start – 1 – 1A – Gate (3S/3P) – Finish (upwind)
- W4 Start – 1 – 1A – Gate (3S/3P) – 1 – 1A – Finish (downwind)
- W5 Start – 1 – 1A – Gate (3S/3P) – 1 – 1A – Gate (3S/3P) – Finish (upwind)
- W6 Start – 1 – 1A – Gate (3S/3P) – 1 – 1A – Gate (3S/3P) – 1 – 1A – Finish (downwind)
- K Start – 1 – 2 – 3 – 1 – Finish (downwind)
- O Start – 1 – 2 – 3 – 1 – 3 – Finish (upwind)

B1.2 Course Diagrams:



B1.3 Course “W” is a Windward/Leeward course with a windward offset mark. A board indicating the number of LEGS to be raced will be shown next to the letter “W”. The distance between the windward mark and the offset mark shall not count as a leg for the purposes of indicating the number of legs.

B1.4 Course “O” is a Triangle/Windward/Leeward/Windward course.

B1.5 Course “K” is a Triangle/Windward/Leeward course.

B1.6 The leeward mark for Courses “W”, “O” and “K” will be an inflatable mark(s) set approximately 0.10 NM to windward of the starting line. A gate mark 3S/3P may be used for Course “W”.

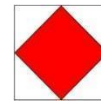
B1.7 The course designations, distance and bearing to the windward mark will be displayed on a board.

B1.8 Marks, including the windward offset mark, shall be rounded in order and always left to port, except that a gate, when used, shall be rounded as described in RRS 28.2(c).

B1.9 There will be a windward offset mark adjacent to the windward mark for courses W2, W3, W4, W5 and W6.

B1.10 Special Finish Mark “F”

If flag “F” is displayed on a separate pole, the finishing line for that class will be between a staff displaying a blue flag on a Race Committee boat and the nearby finishing mark approximately 0.4 NM north of the Fl R 6 sec Horn “2” on the northern point of Fort Adams. In the absence of the Race Committee boat and/or finishing mark, the finishing line will be on a bearing of 120° from G “3” Gong southeast of Rose Island. This changes SI Addendum B1.1.



- B1.11 Melges IC37:** The Race Committee will set a pink inflatable limit mark approximately 6-8 boat lengths to leeward of the windward mark with the intention of keeping boats away from the port tack layline.
- a) The limit mark shall be left to port on both the upwind and the downwind legs.
 - b) In the event of a change of course to the windward mark after the first windward mark rounding in that race, the limit mark will not be set.
 - c) The location of the limit mark or the failure of the Race Committee to set the limit mark shall not be grounds for a boat to request redress. This changes rule 62.1(a).

B1.12 ORC 1/ORC 2/ORC 3: For all “W” courses, the Race Committee will set both a long windward mark and offset, and a short windward mark and offset. The distance to the long windward mark and the distance to the short windward mark will be displayed on a course board. ORC 1 shall use the long mark for all roundings. ORC 2 shall use the long mark for their first windward mark rounding and the short mark for all subsequent roundings. ORC 3 shall use the short mark for all roundings.

B2 MARKS FOR DROP MARK COURSES

B2.1 Marks will be inflatable buoys as follows:

<u>Circle</u>	<u>Original marks</u>	<u>Starting</u>	<u>Finishing</u>	<u>Change marks</u>
WHITE	Orange	Green	Pink	Yellow
BLUE	Yellow	Green	Pink	Orange
RED	Yellow	Green	Pink	Orange

B3 COURSE CHANGE

- B3.1** To change the next leg of the course, the Race Committee will lay a new mark (or move the finishing line) and remove the original mark as soon as practicable. When in a subsequent change a new mark is replaced, it will be replaced by an original mark.
- B3.2** The Race Committee may change the course by up to five degrees in bearing and/or 0.2 nm in length without a signal or change of mark color. This changes RRS 33.
- B3.2** In addition to the requirements in RRS 33, the Race Committee will attempt to announce any course change on their respective circle VHF channel. Failure to make such an announcement shall not be grounds for a boat to request redress. This changes RRS 62.1(a).

B4 THE FINISH

- B4.1** The finishing line will be between a staff displaying a blue flag on a Race Committee boat and the nearby finishing mark.
- a) For Course “W”, with an odd number of legs, and Course “O”, the finish line will be located approximately 0.1 NM to windward of the windward mark.
 - b) For Course “W”, with an even number of legs, and Course “K”, the finish line will be located approximately 0.1 NM to leeward of the leeward mark and the finishing mark will be on the opposite side of the Race Committee signal boat from the starting mark. See diagrams in SI Addendum B1.2.
- B4.2** The Race Committee vessel at the finish may or may not be the same vessel that started the race.

SAILING INSTRUCTIONS
ADDENDUM C – NYYC PRIMARY RACE AREAS

